

Anti Reverse Current Connection SOP For MT Series Product

1. Background:

In order to realize anti reverse current application for MT series product.

2. Range:

1).This document shall be used for all of the GoodWe MT series products;

2).This document is only used for customer who will do the anti reverse current connection for MT series.

3. Purpose:

1).To show how to do the anti reverse current connection for GoodWe MT series product;

2).To answer the frequent asking questions when the user does the anti reverse current connection.

4. Preparation:



3 pieces of 200/5 CTs



1 piece of 5A/three phase meter



Cross Screwdriver



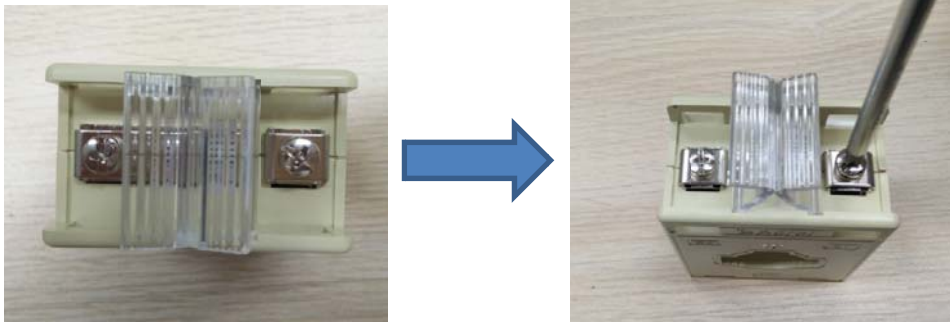
Allen Key



6Pin Connector

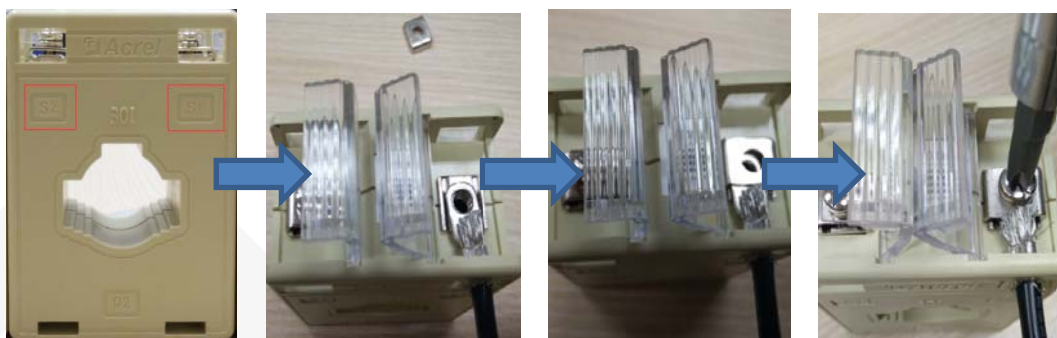
5. Method:

1).Lift up the plastic lid on CT and release the 2 screws;

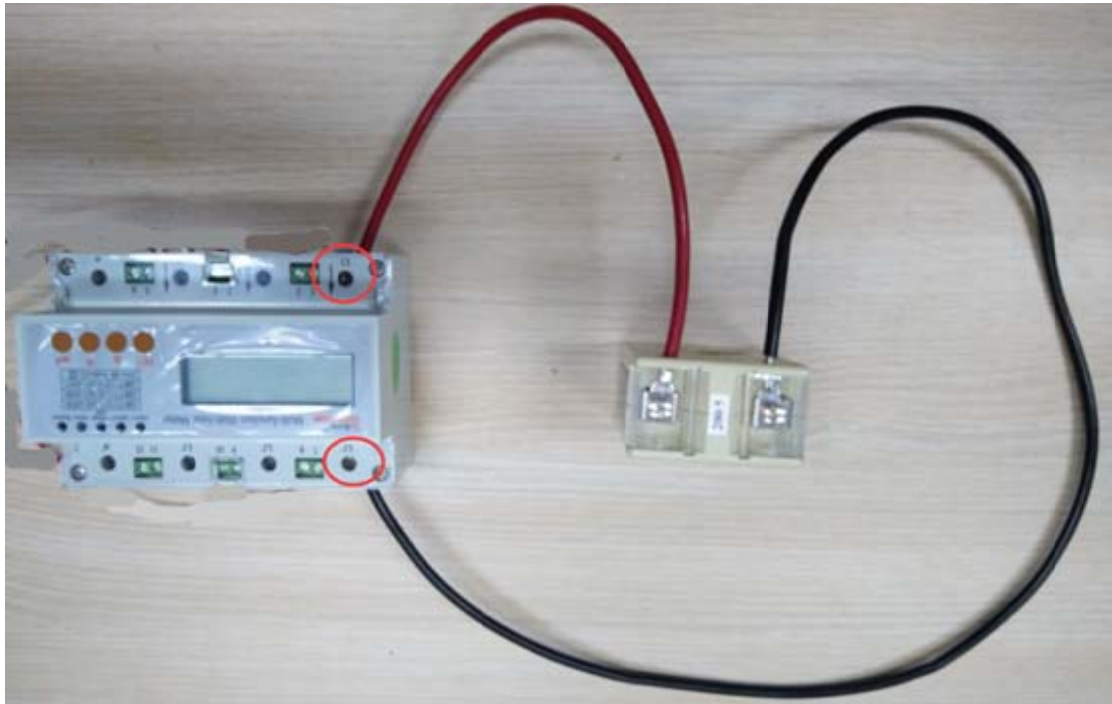


2).Put the red cable on CT's S1 and black cable on CT's S2 then fasten the screws;

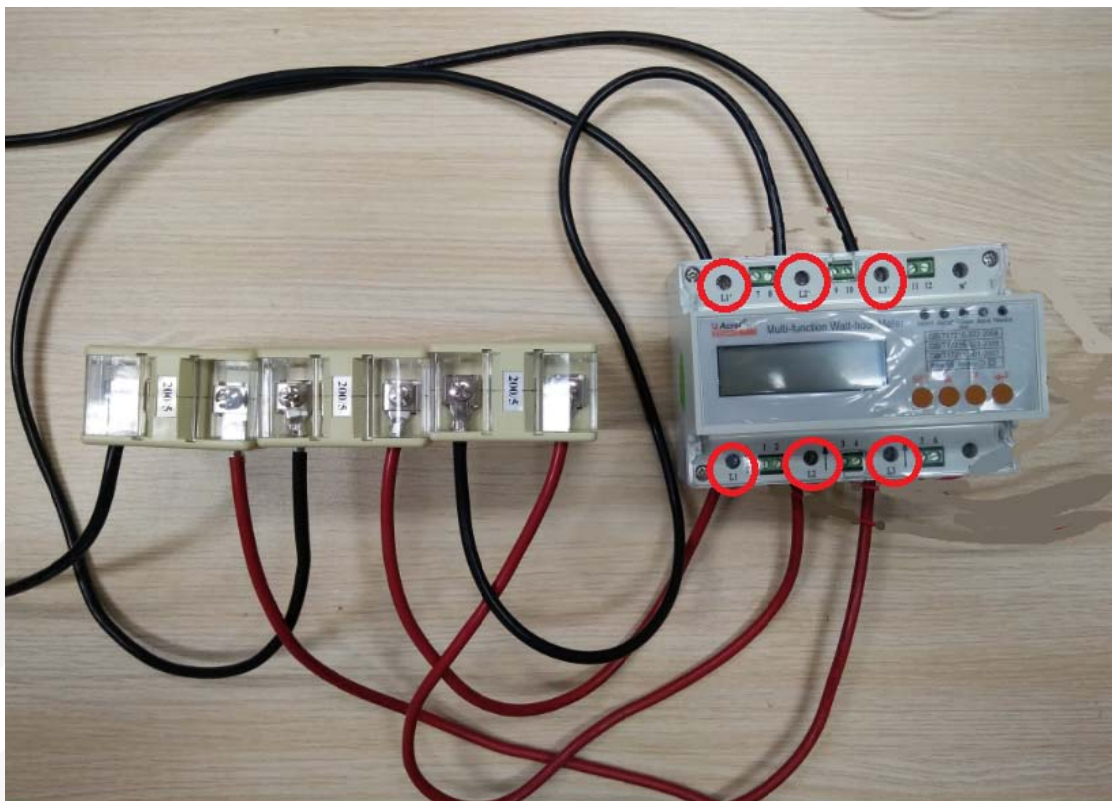
Note: Please according to field application to decide the length of the red and black cable.



3).Connect the red cable on first CT to meter's terminal L1 and black cable to meter's terminal L1';



- 4). Connect the red cable on second CT to meter's terminal L2 and black cable to meter's terminal L2', Connect the red cable on third CT to meter's terminal L3 and black cable to meter's terminal L3';



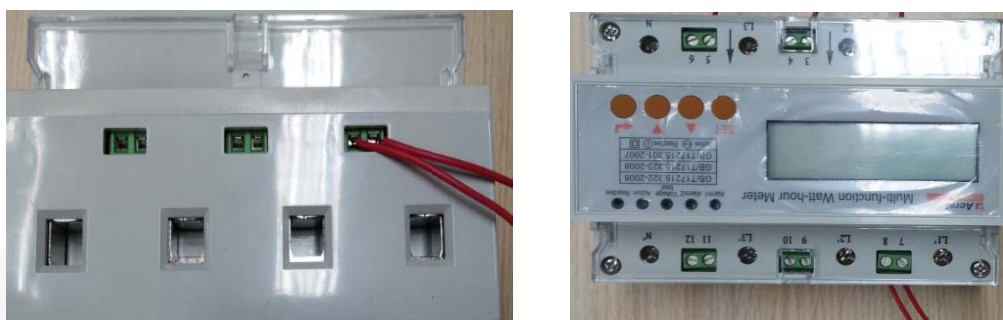
5). Unscrew these 6 pieces screws and remove the under cover on MT;

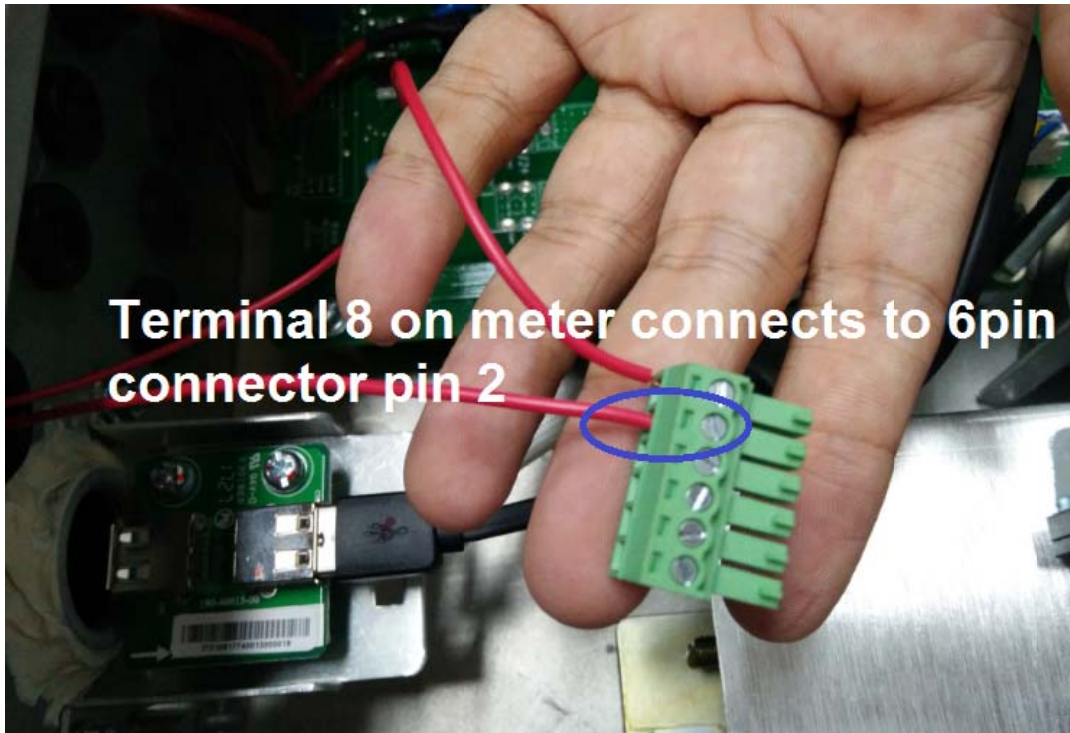
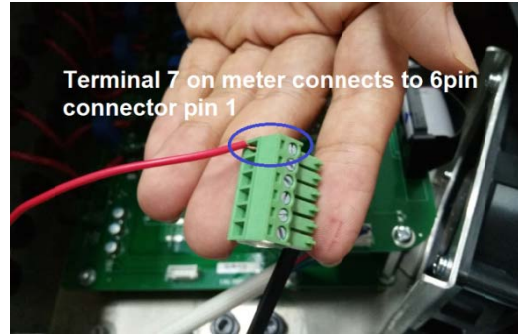
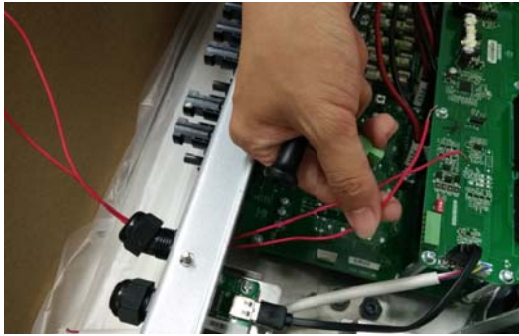


6). Connect meter terminal 1 , 3 , 5 to MT AC terminal L1 , L2 , L3;



7). Connect meter terminal 7 , 8 and pass the cables through the MT RS485 terminal to 6pin connector pin 1 and pin 2;



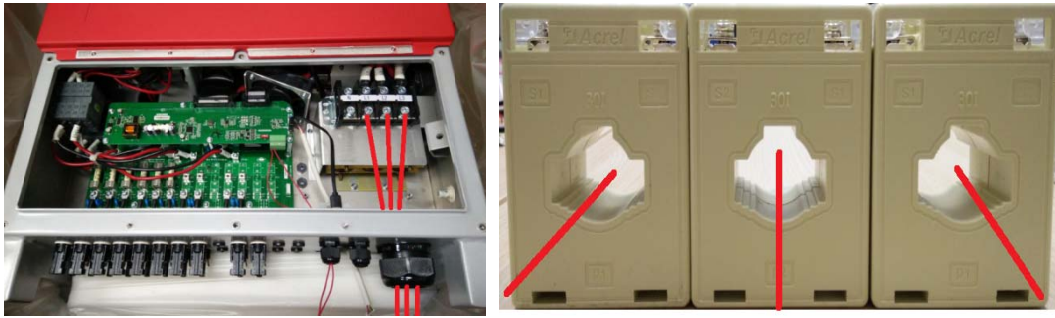


8). Plug the 6pin connector onto MT communication board;



9). Connect MT AC terminal L1 , L2 , L3 with three phase cable and pass

the cables through the 3 CTs;

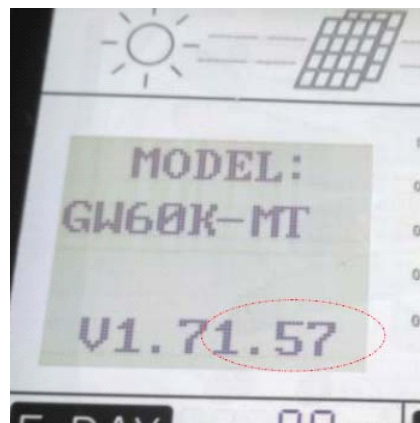


10).Put the under cover back onto MT and fasten the 6 screws;

11). Install the meter and fix three CTs onto the right place where the user requires;

12).Power on the inverter and check the inverter screen if the firmware version is V1.71.57;

Note: If the firmware version is lower than V1.71.57, please contact GoodWe after-sales service to upgrade the inverter.



13).Find the Power Limit menu and set the parameters you want.

